



Bryan Bishop
and partners

Molewood Road
Hertford, SG14 3AQ

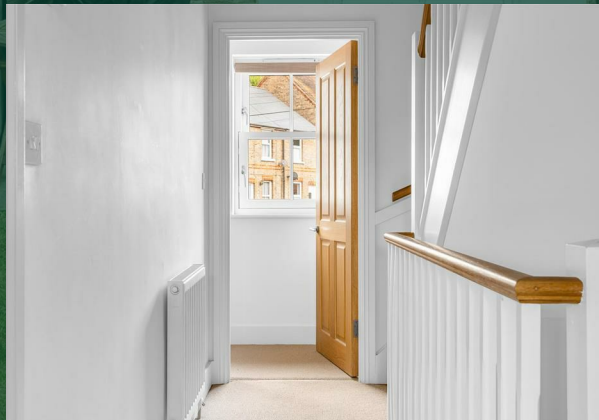


Molewood Road

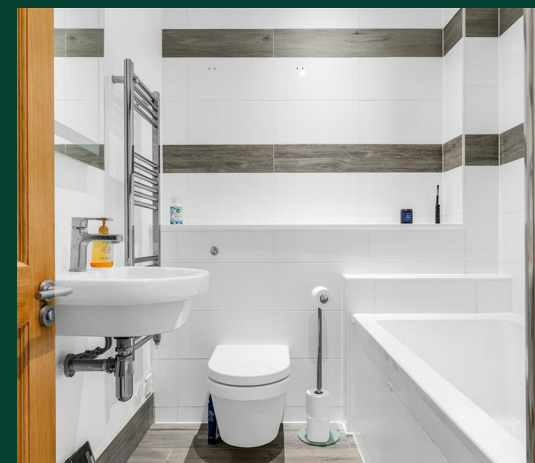
Hertford, SG14 3AQ





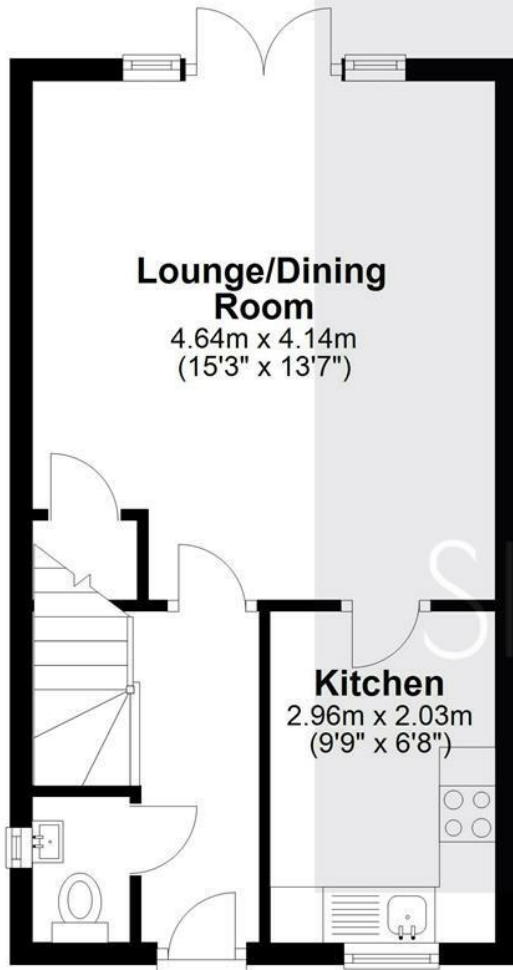






Ground Floor

Approx. 31.9 sq. metres (343.7 sq. feet)



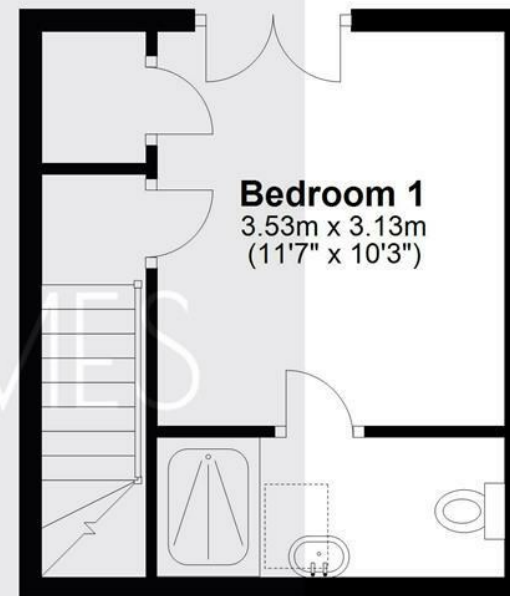
First Floor

Approx. 31.9 sq. metres (343.3 sq. feet)



Second Floor

Approx. 19.7 sq. metres (212.0 sq. feet)



Total area: approx. 83.5 sq. metres (899.0 sq. feet)

Energy Efficiency Rating		
	Current	Potential
Very energy efficient - lower running costs		
(92 plus) A		95
(81-91) B	85	
(69-80) C		
(55-68) D		
(39-54) E		
(21-38) F		
(1-20) G		
Not energy efficient - higher running costs		
England & Wales		
EU Directive 2002/91/EC		







Bryan Bishop
and partners

6a High Street | Welwyn | AL6 9EG | 01438 718877 | info@bryanbishop.co.uk | www.bryanbishop.co.uk Find us on

